



**Thermo Scientific Revco®
Value Freezers and Refrigerators**

**General Purpose
Explosion Proof
Flammable Material
Chromatography**

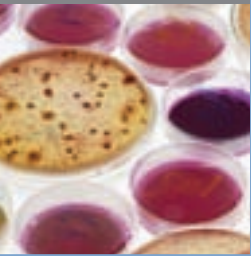
Economical solutions for safe cold storage

General Purpose Refrigerators, Freezers and Combinations

Thermo Scientific Revco laboratory refrigerators and freezers are an economical choice for common non-critical laboratory requirements. Models provide dependable refrigeration systems and quality cabinet construction with basic control features.



Laboratory Refrigerators, left to right: Models RLR4304A and RLR314A.



Economical solutions for safe cold storage

Refrigerators and Combinations

Operating Temperature

- Refrigerator +2°C to +10°C
- Freezer -12°C to -18°C

Inventory System

- High-strength shelves with interior door shelving for added inventory capacity

Refrigeration System

- Hermetically sealed compressor for quiet operation, CFC-free refrigerants

Defrost

- Automatic defrost system on large capacity models RLR294A, RLR314A and RCRF252A, all other models, manual defrost
- Built-in condensate drain on 14.5 and 20.7 cu. ft. models

Cabinet Construction

- High-density, CFC-free, foamed-in-place urethane insulation

Door(s)

- Model RLR4304A features dual pane, sliding glass doors
- Hinged glass door on model RLR314A
- Magnetic door gaskets for positive seal; 14.5, 20.7, 29 and 31 cu. ft. models feature keyed door lock

Electrical

- Power cord and plug provided for all models with 115v, 60Hz operation, NEMA 5-15R/5-15

Finish

- Durable, white acrylic exterior and seamless interior

Lights

- Interior lights on models RLR314A, LR4304A and RCRF252A

Laboratory Freezers

Operating Temperature

- Adjustable -12°C to -20°C

Inventory System

- High-strength shelves (non-adjustable except for model RLF2918A), plus door shelving for increased storage capacity

Refrigeration System

- Hermetically sealed compressor for quiet operation, CFC-free refrigerants

Defrost

- Manual defrost on models REF1617A and REF2117A
- Automatic defrost on model RLR2918A

Cabinet Construction

- High-density urethane foam insulation

Door

- Magnetic door gaskets for positive seal
- Models REF1617A, REF2117A and RLF2918A include a keyed door lock

Electrical

- Power cord and plug provided for all models with 120 V, 60 Hz operation, NEMA 5-15R/5-15P

Finish

- Durable, white acrylic exterior and seamless interior

Lights

- Interior lights on model RLF2918A



-20°C Laboratory Freezer Model REF2117A.

ORDERING INFORMATION



Thermo Scientific Revco Refrigerators

Temperature Range: +2°C to +10°C (manual defrost)									
Model No.	Cu. Ft. (L)	Voltage (Hz)	Amps/ Breaker (Plug)	Style/ Door	Shelves Interior	Shelves Door	Interior Dimensions* H x D x W inches (mm)	Exterior Dimensions* H x D x W inches (mm)	Ship Weight lb (kg)
RFS164A	14.5 (411)	120 (60)	5/15 5-15R/5-15P	Upright/ Solid	3	5	51.5 x 18.5 x 27.0 (1310 x 470 x 690)	65.2 x 28.3 x 30.0 (1660 x 720 x 760)	235 (107)
RFS214A	20.7 (586)	120 (60)	5/15 5-15R/5-15P	Upright/ Solid	4	6	57.5 x 23.5 x 27.0 (1460 x 600 x 690)	70.2 x 32.2 x 32.0 (1800 x 820 x 810)	250 (114)

Thermo Scientific Revco Refrigerator/Freezer Combinations

Temperature Range: Refrigerator +2°C to +10°C, Freezer -12°C to -18°C (manual defrost)									
Model No.	Cu. Ft. (L)	Voltage (Hz)	Amps/ Breaker (Plug)	Style/ Door	Shelves Interior	Shelves Door	Interior Dimensions* H x D x W inches (mm)	Exterior Dimensions* H x D x W inches (mm)	Ship Weight lb (kg)
RFS54A	4.7/133 ref. 1.3/37 frz.	120 (60)	2.0/15 5-15R/5-15P	Undercounter/ Solid	3 (ref.)	3 (ref.)	ref. 21.1 x 18.0 x 21.3 (540 x 460 x 540) frz. 7.5 x 15.0 x 19.6 (190 x 380 x 500)	33.9 x 26.9 x 23.6 (860 x 680 x 600)	103 (47)
FMSC112A	8.6/244 ref. 2.4/68 frz.	120 (60)	3.8/15 5-15R/5-15P	Upright/ Solid Double Door	4 (ref.)	6 (ref.)	ref. 35.3 x 19.0 x 20.0 (900 x 480 x 510) frz. 13.0 x 18.0 x 17.5 (330 x 460 x 440)	58.8 x 26.6 x 23.5 (1490 x 680 x 600)	182 (83)

Thermo Scientific Revco Freezers

Temperature Range: -12°C to -20°C (manual defrost)									
Model No.	Cu. Ft. (L)	Voltage (Hz)	Amps/ Breaker (Plug)	Style/ Door	Shelves Interior	Shelves Door	Interior Dimensions* H x D x W inches (mm)	Exterior Dimensions* H x D x W inches (mm)	Ship Weight lb (kg)
FMS1618A	17.3 (490)	120 (60)	1.8/15 5-15R/5-15P	Upright/ Solid	3	5	51.5 x 21.5 x 27.0 (1310 x 550 x 690)	65.2 x 30.0 x 32.0 (1660 x 760 x 810)	235 (107)
FMS2118A	20.7 (586)	120 (60)	1.8/15 5-15R/5-15P	Upright/ Solid	4	6	57.0 x 23.0 x 27.0 (1450 x 580 x 690)	70.2 x 32.2 x 32.0 (1780 x 820 x 810)	250 (114)

* Published interior volumes are nominal; useable cu.ft. (L) capacities may be offset by shelves, drawers, blower coils or cabinet protrusions. For specific cabinet dimensions and allowances, or for verification of clearance tolerances, contact your sales representative. Product performance may be affected by ambient temperature conditions, humidity conditions, sample loading preferences and frequency of door openings. Contact your sales representative for specific enquiries regarding your application.

Products are intended for basic laboratory use only. Storage of high-value life science materials or critical biologicals may require alarm, monitoring, backup and temperature performance features. The need to add these features should be determined by your industrial hygienist or safety officer. Not suitable for corrosive environments.

Flammable Material Refrigerators, Freezers and Combinations

Designed to ensure maximum safety for storage of flammable and volatile materials, our refrigerators, combination refrigerator/freezer cabinets and -20°C freezers meet NFPA and OSHA standards and are UL listed.

All flammable material storage cabinets feature CFC-free, foamed-in-place cabinet insulation, hermetically sealed refrigeration compressors and adjustable temperature control.

Flammable Material Storage Refrigerator/Freezer Combination: double door Model FMSC112A.



Flammable material storage solutions

Refrigerators, Freezers and Combination Units

Operating Temperature

- Refrigerators +2°C to +10°C
- Freezers -12°C to -20°C
- Refrigerator/Freezer Combinations, Refrigerator +2°C to +10°C. Freezer -12°C to -18°C

Inventory System

- Interior shelving with door storage shelves
- Combination refrigerator/freezer models include slide-out bulk storage drawer

Refrigeration System

- Quiet, hermetically sealed compressor
- CFC-free refrigerants

Defrost

- Manual, built-in defrost drain on 17.3 and 20.7 cu. ft. freezer models

Cabinet Construction

- Heavy-gauge steel
- CFC-free, foamed-in-place urethane insulation helps minimize operating cost
- Interior is corrosion-resistant, easy-to-clean and spark-proof
- Adjustable leveling feet

Door(s)

- Non-sparking magnetic gasket
- 17.3 and 20.7 cu. ft. models include keyed door lock

Electrical

- Power cord and plug provided for all models with 120 V, 60 Hz operation, NEMA 5-15R/5-15P

Finish

- White acrylic, scratch-resistant exterior

Flammable material refrigerators and freezers are designed for storage of volatile materials but are not intended for use in hazardous areas.

All models meet OSHA standards and applicable UL requirements. Access ports, casters and extra shelving are not available for flammable storage units.



ORDERING INFORMATION

Thermo Scientific Revco Refrigerators

Temperature Range: +2°C to +10°C (manual defrost)									
Model No.	Cu. Ft. (L)	Voltage (Hz)	Amps/ Breaker (Plug)	Style/ Door	Shelves Interior	Shelves Door	Interior Dimensions* H x D x W inches (mm)	Exterior Dimensions* H x D x W inches (mm)	Ship Weight lb (kg)
RLR065A	7.0 (184)	115 (60)	5/15 (5-15R/5-15P)	Undercounter/ Solid	3	2	27.0 x 21.0 x 18.0 (686 x 521 x 458)	34.0 x 24.0 x 24.0 (867 x 610 x 610)	116 (52)
RLR1611A	14.5 (411)	120 (60)	5/15 (5-15R/5-15P)	Upright/ Solid	3	5	51.5 x 18.5 x 27.0 (1310 x 470 x 690)	65.2 x 26.5 x 28.0 (1660 x 670 x 710)	235 (107)
RLR2111A	20.7 (586)	120 (60)	5/15 (5-15R/5-15P)	Upright/ Solid	4	6	57.5 x 23.5 x 27.0 (1460 x 600 x 690)	70.2 x 30.2 x 32.0 (1800 x 770 x 810)	250 (114)
RLR294A ¹ auto defrost	29.2 (827)	120 (60)	5.7/15 (5-15R/5-15P)	Upright/ Solid	4	7	65.1 x 28.0 x 32.0 (1650 x 710 x 810)	76.2 x 31.6 x 35.0 (1940 x 800 x 890)	350 (159)
RLR314A ¹ auto defrost	31.1 (881)	120 (60)	7.2/15 (5-15R/5-15P)	Upright/ Glass	4	0	63.2 x 24.0 x 32.0 (1610 x 610 x 810)	76.2 x 31.7 x 36.3 (1940 x 810 x 920)	350 (159)
RLR4304A	43.0 (1218)	120 (60)	9.2/20 (5-15R/5-15P)	Upright/ Sliding Glass	8	0	57.0 x 26.5 x 49.0 (1450 x 670 x 1240)	76.0 x 72.0 x 53.0 (1930 x 810 x 1350)	645 (293)
RLR6604A	66.0 (1870)	120 (60)	12.0/20 (5-20R/5-20P)	Upright/ 3 Sliding Glass	15	0	55.0 x 25.5 x 71.0 (1400 x 650 x 1800)	78.0 x 30.0 x 75.0 (1980 x 760 x 1910)	707 (321)

¹ Casters standard.

Thermo Scientific Revco Refrigerator/Freezer Combinations

Temperature Range: Refrigerator +2°C to +10°C, Freezer -12°C to -18°C (manual defrost)									
Model No.	Cu. Ft. (L)	Voltage (Hz)	Amps/ Breaker (Plug)	Style/ Door	Shelves Interior	Shelves Door	Interior Dimensions* H x D x W inches (mm)	Exterior Dimensions* H x D x W inches (mm)	Ship Weight lb (kg)
RPR24A	1.5/43 ref. (0.5/8 frz.)	120 (60)	1.5/15 (5-15R/5-15P)	Tabletop/ Solid	1 (ref.)	2 (ref.)	ref. 15.8 x 14.2 x 16.7 (400 x 360 x 420) frz. 8.3 x 11.0 x 10.3 (210 x 280 x 260)	20.7 x 20.0 x 19.7 (530 x 500 x 500)	38 (18)
RLR511A	4.7/133 ref. (1.3/37 frz.)	120 (60)	2.0/15 (5-15R/5-15P)	Undercounter/ Solid	3 (ref.)	3 (ref.)	ref. 21.1 x 18.0 x 21.3 (540 x 460 x 540) frz. 7.5 x 15.0 x 19.6 (190 x 380 x 500)	33.9 x 25.0 x 23.6 (860 x 640 x 600)	103 (47)
RRCF112A	8.6/244 ref. (2.4/68 frz.)	120 (60)	3.8/15 (5-15R/5-15P)	Upright/ Solid Double Door	4 (ref.)	6 (ref.)	ref. 35.3 x 19.0 x 20.0 (900 x 480 x 510) frz. 13.0 x 18.0 x 17.5 (330 x 460 x 440)	58.8 x 25.8 x 23.5 (1490 x 660 x 600)	182 (83)
RRCF192A	13.1/370 ref. (5.4/152 frz.)	120 (60)	7.2/15 (5-15R/5-15P)	Upright/ Solid Double Door	2 (ref.) (1 frz.)	3 (ref.) (2 frz.)	ref. 39.0 x 24.0 x 26.0 (990 x 610 x 660) frz. 17.3 x 21.8 x 25.3 (440 x 550 x 640)	67.3 x 30.9 x 29.6 (1710 x 780 x 750)	225 (102)
RRCF252A auto defrost	17.5/496 ref. (7.1/201 frz.)	120 (60)	5.7/15 (5-15R/5-15P)	Upright/ Solid Double Door	4 (ref.) (1 frz.)	6 (ref.) (2 frz.)	ref. 37.8 x 24.5 x 32.0 (960 x 620 x 810) frz. 18.8 x 20.5 x 31.0 (480 x 520 x 790)	68.6 x 33.6 x 36.0 (1740 x 850 x 910)	142 (64)

Thermo Scientific Revco Freezers

Temperature Range: -12°C to -20°C (manual defrost, except RLF2918A, auto defrost)									
Model No.	Cu. Ft. (L)	Voltage (Hz)	Amps/ Breaker (Plug)	Style/ Door	Shelves Interior	Shelves Door	Interior Dimensions* H x D x W inches (mm)	Exterior Dimensions* H x D x W inches (mm)	Ship Weight lb (kg)
REF417A	5.0 (141)	115 (60)	5/15 (5-15R/5-15P)	Undercounter/ Solid	2	3	29.0 x 19.0 x 20.0 (737 x 476 x 495)	34.0 x 21.0 x 27.0 (851 x 540 x 673)	84 (38)
REF1617A	17.3 (490)	120 (60)	1.8/15 (5-15R/5-15P)	Upright/ Solid	3	5	51.5 x 21.5 x 27.0 (1310 x 550 x 690)	65.2 x 28.0 x 32.0 (1660 x 710 x 810)	235 (107)
REF2117A	20.7 (586)	120 (60)	1.8/15 (5-15R/5-15P)	Upright/ Solid	4	6	57.0 x 23.0 x 27.0 (1450 x 580 x 690)	70.2 x 30.2 x 32.0 (1780 x 770 x 810)	250 (114)
RLF2918A auto defrost	30.4 (861)	120 (60)	9.0/15 (5-15R/5-15P)	Upright/ Solid	4	7	63.5 x 26.0 x 32.0 (1610 x 660 x 810)	72.5 x 34.0 x 35.5 (1840 x 860 x 900)	350 (159)

Optional Accessories	Catalog No.
1" porthole with cover	6105
Digital LCD solar temperature display door mounted (factory installed)	7114
Key lock (factory installed)	6186
Key lock with hasp (factory installed)	7208

* Published interior volumes are nominal; useable cu.ft. (L) capacities may be offset by shelves, drawers, blower coils or cabinet protrusions. For specific cabinet dimensions and allowances, or for verification of clearance tolerances, contact your sales representative. Product performance may be affected by ambient temperature conditions, humidity conditions, sample loading preferences and frequency of door openings. Contact your sales representative for specific enquiries regarding your application.

Products are intended for basic laboratory use only. Storage of high-value life science materials or critical biologicals may require alarm, monitoring, backup and temperature performance features. The need to add these features should be determined by your industrial hygienist or safety officer. Not suitable for corrosive environments.

Explosion Proof Refrigerators, Freezers and Combinations

Our explosion proof refrigerators and freezers are designed to meet NFPA and OSHA standards for safe storage of volatile materials. A variety of UL listed cabinets offer capacities to fit an array of space and volume requirements.

All electrical components are steel-encased, and cabinet interiors are spark-proof with a non-sparking magnetic door gasket. Foamed-in-place, CFC-free urethane insulation protects against high ambient temperatures.



Explosion Proof Refrigerator/Freezer Combination: double door Model RXPC112A.



Explosion proof storage solutions

Refrigerators, Freezers and Combination Units

Operating Temperature

- Refrigerators +2°C to +10°C
- Freezers -12°C to -20°C
- Refrigerator/Freezer Combinations, Refrigerator +2°C to +10°C. Freezer -12°C to -18°C

Inventory System

- Interior shelving with door storage shelves
- Combination refrigerator/freezer models include slide-out bulk storage drawer

Refrigeration System

- Quiet, hermetically sealed compressor
- CFC-free refrigerants

Defrost

- Manual, built-in defrost drain on 14.5 and 20.7 cu. ft. freezer models

Cabinet Construction

- Heavy-gauge steel
- CFC-free, foamed-in-place urethane insulation helps minimize operating cost
- Interior is corrosion-resistant, easy-to-clean and spark-proof
- Electrical components steel-encased
- Adjustable leveling feet

Door(s)

- Non-sparking magnetic gasket
- 14.5 and 20.7 cu. ft. models include keyed door lock

Electrical

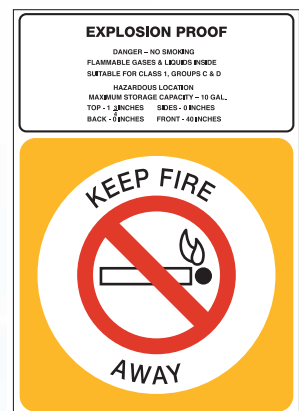
- Must be hardwire connected in accordance with local codes

Finish

- White acrylic, scratch-resistant exterior

Explosion proof refrigerators and freezers must be hardwire connected in accordance with local electrical codes. Access ports, casters and extra shelving are not available for explosion proof units.

All models are designed for safe storage of volatile materials in hazardous areas. All models meet NFPA and OSHA standards, and UL requirements for Class 1, Group C and D applications.





Thermo Scientific Revco Refrigerators

Temperature Range: +2°C to +10°C (manual defrost)									
Model No.	Cu. Ft. (L)	Voltage (Hz)	Amps/Breaker	Style/Door	Shelves Interior	Shelves Door	Interior Dimensions* H x D x W inches (mm)	Exterior Dimensions* H x D x W inches (mm)	Ship Weight lb (kg)
RXP164A	14.5 (411)	120 (60)	5/15 Hardwired	Upright/Solid	3	5	51.5 x 18.5 x 27.0 (1310 x 470 x 690)	65.2 x 32.0 x 32.7 (1660 x 810 x 830)	235 (107)
RXP214A	20.7 (586)	120 (60)	5/15 Hardwired	Upright/Solid	4	6	57.5 x 23.5 x 27.0 (1460 x 600 x 690)	70.2 x 34.8 x 32.0 (1800 x 880 x 810)	250 (114)

Thermo Scientific Revco Refrigerator/Freezer Combinations

Temperature Range: Refrigerator +2°C to +10°C, Freezer -12°C to -18°C (manual defrost)									
Model No.	Cu. Ft. (L)	Voltage (Hz)	Amps/Breaker	Style/Door	Shelves Interior	Shelves Door	Interior Dimensions* H x D x W inches (mm)	Exterior Dimensions* H x D x W inches (mm)	Ship Weight lb (kg)
RXP54A	4.7/133 ref. 1.3/37 frz.	120 (60)	2.0/15 Hardwired	Undercounter/Solid	3 (ref.)	3 (ref.)	ref. 21.1 x 18.0 x 21.3 (540 x 460 x 540) frz. 7.5 x 15.0 x 19.6 (190 x 380 x 500)	33.9 x 25.0 x 23.6 (860 x 640 x 600)	103 (47)
RXPC112A	8.6/244 ref. 2.4/68 frz.	120 (60)	3.8/15 Hardwired	Upright/Solid Double Door	4 (ref.)	6 (ref.)	ref. 35.3 x 19.0 x 20.0 (900 x 480 x 510) frz. 13.0 x 18.0 x 17.5 (330 x 460 x 440)	58.8 x 29.4 x 23.5 (1490 x 750 x 600)	182 (83)

Thermo Scientific Revco Freezers

Temperature Range: -12°C to -20°C Operating Temperature (manual defrost)									
Model No.	Cu. Ft. (L)	Voltage (Hz)	Amps/Breaker	Style/Door	Shelves Interior	Shelves Door	Interior Dimensions* H x D x W inches (mm)	Exterior Dimensions* H x D x W inches (mm)	Ship Weight lb (kg)
EXF1618A	17.3 (490)	120 (60)	1.8/15 Hardwired	Upright/Solid	3	5	51.5 x 21.5 x 27.0 (1310 x 550 x 690)	65.2 x 32.7 x 32.0 (1660 x 830 x 810)	235 (107)
EXF2118A	20.7 (586)	120 (60)	1.8/15 Hardwired	Upright/Solid	4	6	57.0 x 23.0 x 27.0 (1450 x 580 x 690)	70.2 x 34.8 x 32.0 (1780 x 880 x 810)	250 (114)

* Published interior volumes are nominal; useable cu.ft. (L) capacities may be offset by shelves, drawers, blower coils or cabinet protrusions. For specific cabinet dimensions and allowances, or for verification of clearance tolerances, contact your sales representative. Product performance may be affected by ambient temperature conditions, humidity conditions, sample loading preferences and frequency of door openings. Contact your sales representative for specific enquiries regarding your application.

Products are intended for basic laboratory use only. Storage of high-value life science materials or critical biologicals may require alarm, monitoring, backup and temperature performance features. The need to add these features should be determined by your industrial hygienist or safety officer. Not suitable for corrosive environments.

Chromatography Refrigerators

Inventory System

- Fully adjustable wire shelves

Cabinet Construction

- Two 2" (51 mm) diameter access ports with hinged covers
- Casters (customer installed) are standard on model RCR314A
- CFC-free foamed insulation
- Interior thermometer

Door(s)

- Multi-pane glass door(s) with spring-loaded closures and 90° stay-open feature
- Closed-cell gaskets maintain interior temperature

Lights

- Fully lighted interior chamber

Electrical

- Two vapor-proof interior outlets, continuous ON
- Power cord and plug provided

Finish

- Interior and exterior surfaces are finished with a high-impact, powder-coated paint
- Shelves are epoxy coated and adjustable in 1" (25 mm) increments



Model RCR4303A

Thermo Scientific Revco Chromatography Refrigerators

Temperature Range: +2°C to +10°C, factory preset to +4°C

Model No.	Cu. Ft. (L)	Voltage (Hz)	Amps/Breaker (Plug)	Style/Door	Full Shelves	Interior Dimensions* H x D x W inches (mm)	Exterior Dimensions* H x D x W inches (mm)	Ship Weight lb (kg)
RCR314A auto defrost	31.1 (881)	120 (60)	7.2/15 20 A	Upright/single glass door	4	63.2 x 24.0 x 32.0 (1610 x 610 x 810)	76.2 x 31.7 x 37.2 (1940 x 810 x 940)	350 (179)
RCR4304A manual defrost	43.0 (1218)	120 (60)	9.2/20 30 A	Upright/sliding glass door	8	57.0 x 26.5 x 49.0 (1450 x 670 x 1240)	76.0 x 32.0 x 55.0 (1930 x 810 x 1400)	645 (299)

* Published interior volumes are nominal; useable cu. ft. (L) capacities may be offset by shelves, drawers, blower coils or cabinet protrusions. For specific cabinet dimensions and allowances, or for verification of clearance tolerances, contact your sales representative. Product performance may be affected by ambient temperature conditions, humidity conditions, sample loading preferences and frequency of door openings. Contact your sales representative for specific enquiries regarding your application.

Optional Accessories	Catalog No.
Free-standing 7-day temperature recorder	6383-7
Chart paper (50 charts per pack)	6184
Additional 1" (25 mm) diameter porthole with cover	6105
Pole mast for chromatography validation testing	6040

About Thermo Fisher Scientific

Thermo Fisher Scientific (NYSE: TMO) is the world leader in serving science, enabling our customers to make the world healthier, cleaner and safer. With annual sales of more than \$9 billion, we employ 30,000 people and serve over 350,000 customers within pharmaceutical and biotech companies, hospitals and clinical diagnostic labs, universities, research institutions and government agencies as well as environmental and industrial process control settings. Serving customers through two premier brands, Thermo Scientific and Fisher Scientific, we help solve analytical challenges from routine testing to complex research and discovery. Thermo Scientific offers customers a complete range of high-end analytical instruments as well as laboratory equipment, software, services, consumables and reagents to enable integrated laboratory workflow solutions. Fisher Scientific provides a complete portfolio of laboratory equipment, chemicals, supplies and services used in healthcare, scientific research, safety and education. Together, we offer the most convenient purchasing options to customers and continuously advance our technologies to accelerate the pace of scientific discovery, enhance value for customers and fuel growth for shareholders and employees alike. Visit www.thermofisher.com.

© 2007 Thermo Fisher Scientific Inc. All rights reserved. All trademarks are the property of Thermo Fisher Scientific Inc. and its subsidiaries. Specifications, terms and pricing are subject to change. Not all products are available in all countries. Please consult your local sales representative for details.

Thermo
SCIENTIFIC

North America: USA/Canada +1 866 984 3766

Europe: Austria +43 1 801 40 0, Belgium +32 2 482 30 30, Finland +358 9 329 100, France +33 2 2803 2000,

Germany national toll free 08001-536 376, Germany international +49 6184 90 6940, Italy +39 02 95059 1, Netherlands +31 76 571 4440,

Russia/CIS +7 095 225 11 15, Spain/Portugal +34 93 223 09 18, Switzerland +41 44 454 12 12, UK/Ireland +44 870 609 9203

Asia: China +86 21 6865 4588 or +86 10 5850 3588, India +91 22 5542 9494, Japan +81 45 453 9220, Other Asian countries +852 2885 4613

Countries not listed: +49 6184 90 6940 or +33 2 2803 2000

www.thermo.com/cold

BRO-CECS-R-Value-0507